

Hardel presents an exciting new residential community offering contemporary living in Unley, one of Adelaide's most prestigious suburbs.

Town homes on the Park

If you require the space of a traditional dwelling, yet desire the low maintenance that only a new home on a compact allotment can provide, then our 3 "Town homes on the Park" are the obvious answer.

To be constructed over 3 levels these Town Homes boast stunning northern views across the park to the Adelaide CBD skyline.

Moreover, at a substantial 250 square metres, they can accommodate the growing needs of a young family or the 'work from home' professional.

With only 3 available be sure to register your interest and obtain further information by visiting our website www.hardel.com.au or calling 1300 882 425



"60 on Charles" Stage 1
10 x 2 storey townhouses
Sold Out

"Charles Place" Stage 1
10 x 2 storey townhouses
Sold Out

"60 on Charles" Stage 2
7 x 2 storey townhouses
Sold Out

"Charles Place" Stage 2
Townhouses
Sold Out

"Charles Place" Stage 3
Apartments
A limited number of 2 bedroom apartments available for sale
Priced from \$450,000
Completion April 2008

"Charles Place" Stage 3
Town Homes
Registrations of Interest
3 x 3 storey Town Home
Only 2 available
Our ultimate design offering expansive living areas and city skyline views
Completion August 2008



Charles Place
Unley
Town Homes

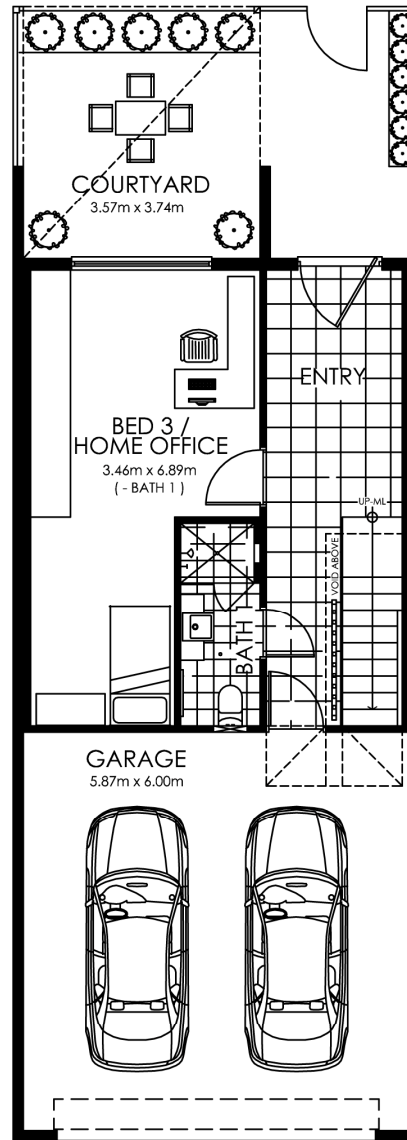
**Completion
August 2008**

Only 2 available

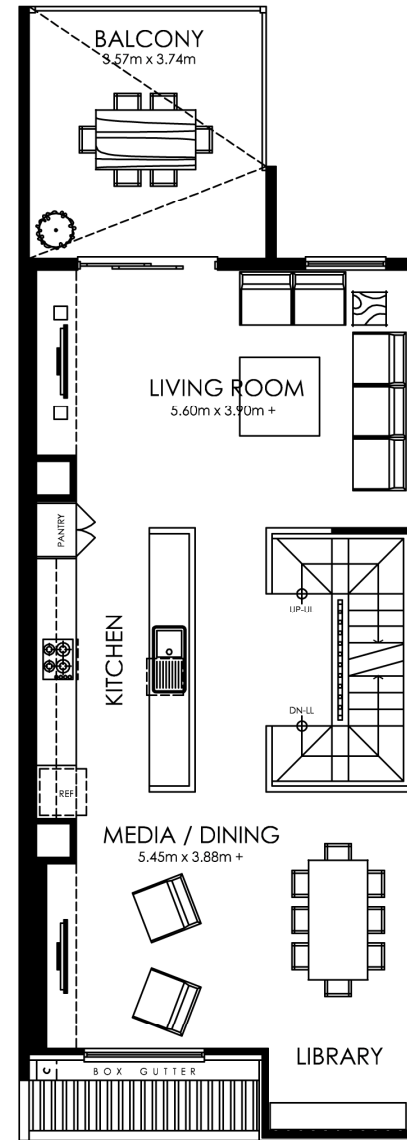
**Register your
interest today**

**3 storey Town Home
3 bedroom, 3 Bathroom + study**

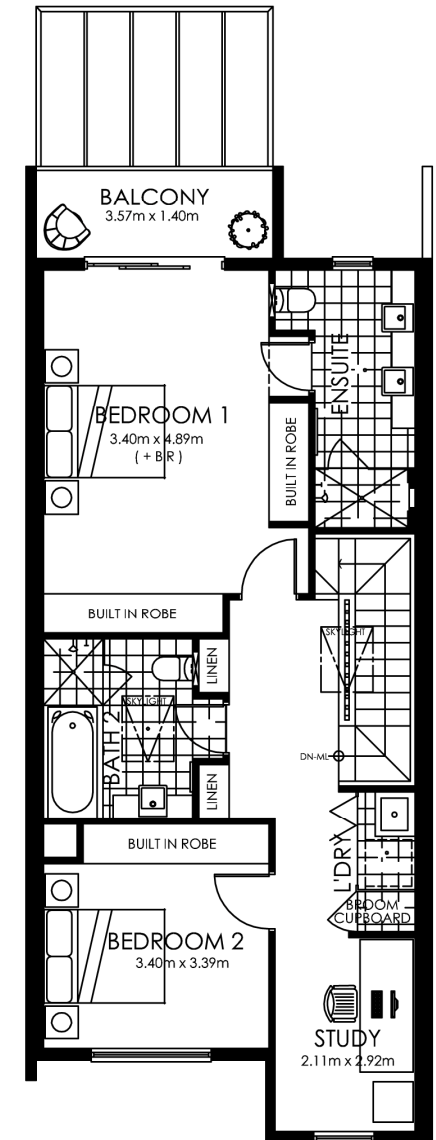
- Timeless, modern design
- Expansive, open plan living with contemporary finishes
- North facing living areas with sweeping city skyline views
- Entertainer's kitchen with 900mm stainless steel European appliances
- Master bedroom with private north facing balcony & luxurious ensuite
- Zoned ducted reverse cycle air conditioning
- Timber floors to level 1
- Intercom & alarm systems
- Double garage + open car space
- Separate guest bathroom
- Built in robes to Beds 1 and 2
- Home office potential on ground floor



GROUND FLOOR PLAN



FIRST FLOOR PLAN



SECOND FLOOR PLAN

Indicative Layout
Not to Scale

Indicative Floor Areas

Grd Flr Living	43.22	Garage	37.18
1st Flr Living	76.06	Courtyard	13.57
2nd Flr Living	76.06	1st Flr Balcony	13.57
		2nd Flr Balcony	5.42
Total Floor Area		+/- 265.08m²	

Charles Place

Unley



Disclaimer:

"All responsible care has been taken in the preparation of these brochures. The information herein does not form any Contract of Sale. The vendor reserves the right to vary or alter any details, dimensions, fixtures, finishes and /or sizes of allotments or residences prior to signing of contracts."